

FIBER OPTIC SOLUTIONS FOR POWER UTILITIES



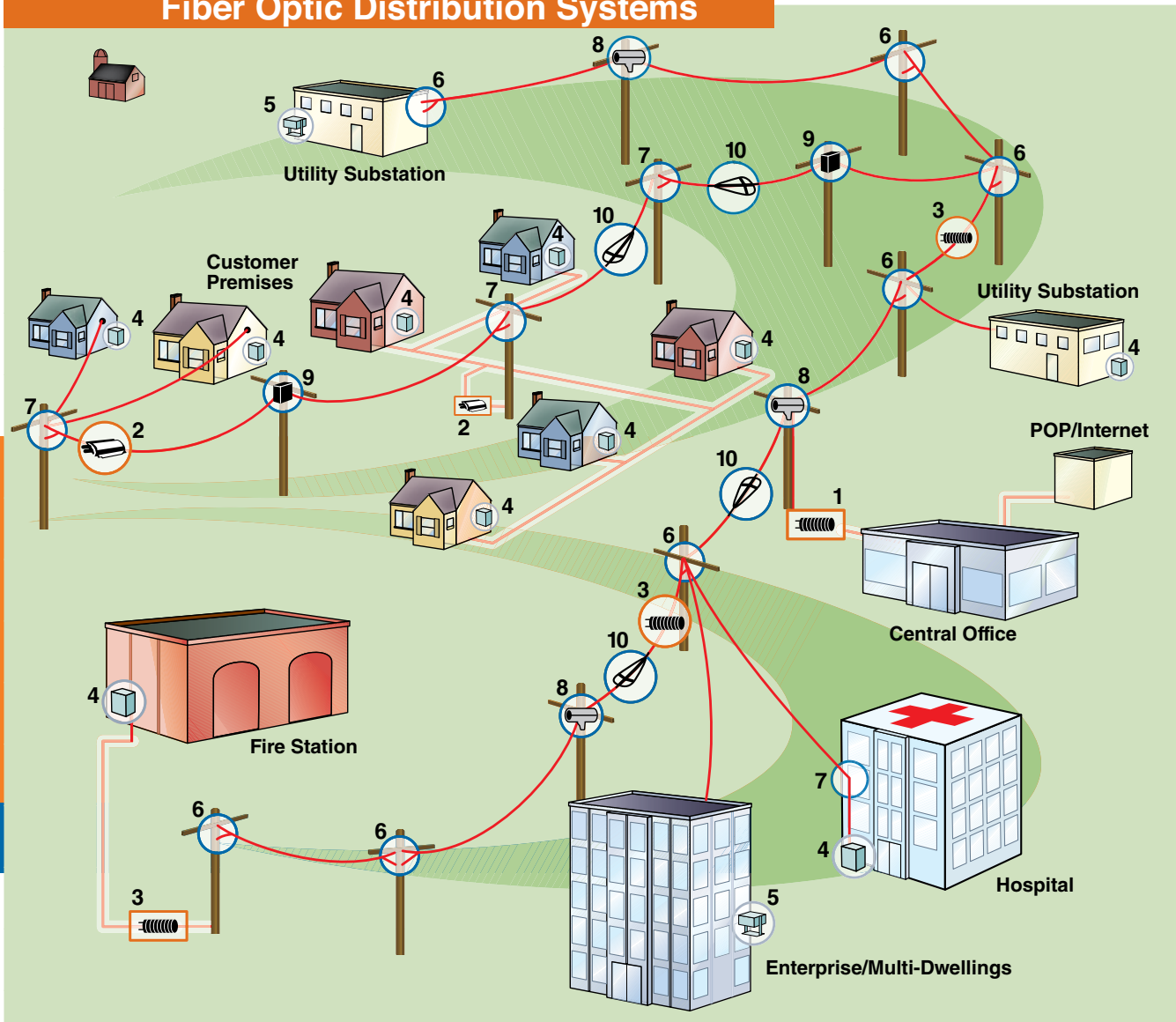
COYOTE[®]
FIBER OPTICS

AXCESS Solutions™

PLP Has System Solutions for:
Utility Applications – Smart Grid
Community Enhancement
FTTX


Aerial & Underground, Semi-Rural to Metro


Fiber Optic Distribution Systems



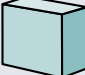
Fiber Optic Splice Closures for Aerial & Underground COYOTE® Series

1. COYOTE High Capacity Dome Closure 28" 

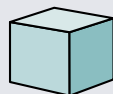
2. COYOTE In-Line RUNT 

3. COYOTE Dome Closure 22" & 17" 

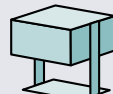
Fiber Optic Demarcation Access Solutions™ Series & COYOTE® Series

4. COYOTE MPC 

5. COYOTE Access Solutions



5A. Wall Mount



5B. Rack Mount


Fiber Optic Cable Attachment Hardware for Aerial ADSS Distribution FIBERLIGN® Series

6. FIBERLIGN Limited Tension Dead-End 

7. FIBERLIGN Lite Tension Dead-End 

8. FIBERLIGN Aluminum Support 

9. FIBERLIGN Lite Support 

10. FIBERLIGN CLAS Storage 

AERIAL & UNDERGROUND SPLICE CLOSURES SOLUTIONS

FIBER OPTIC SPLICE CLOSURES: COYOTE® SERIES

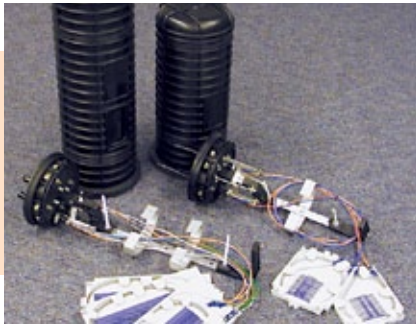


COYOTE High Capacity Dome – 28" long*

Typical Applications

High Splice Density Systems, Placed near Central Office

Specification	Features	Accessories
<i>Dimensions:</i> 9.5" x 28"	<ul style="list-style-type: none"> Segmented Endplate for independent port access Grommet sealing system for single or multiple cable entries No special tools required Collar System for quick re-entry 	<ul style="list-style-type: none"> 80 Ct. LITE-GRIP® Splice Tray #LGSTS40 ADSS Aerial Mounting: 8003941 Vertical Mounting: 8003942
<i>Splice Capacity:</i> 720 single fusion		
<i>Cable Entrance Ports:</i> 7 x 1 1/4" max cable OD		
<i>Multi-hole Grommets:</i> up to 12 entry per grommet		



COYOTE Dome – 22" long & 17" long*

Typical Applications

Medium to High Count Splicing, Main cable or Main Branch, Distribution

Specification	Features	Accessories
<i>Dimensions:</i> 6.5" x 22" and 6.5" x 17"	<ul style="list-style-type: none"> Segmented Endplate for independent port access Grommet sealing system for single or multiple cable entries No special tools required Collar System for quick re-entry 	<ul style="list-style-type: none"> LITE-GRIP Tray 80 Ct. #LGSTS40 for 22" 40 Ct. #LGSTS16 for 17" ADSS Aerial Mounting: 8003833 Vertical Mounting: 8003702
<i>Splice Capacity:</i> 240 and 120 single fusion		
<i>Cable Entrance Ports:</i> 4 x 1 1/4" max cable OD		
<i>Multi-hole Grommets:</i> up to 12 entry per grommet		



COYOTE IN-LINE RUNT*

Typical Applications

Low to Medium Count Splicing, Express Distribution, Extended Network Penetration and Drops for FTTH

Specification	Features	Accessories
<i>Dimensions:</i> 17.5" x 10" x 3.5"	<ul style="list-style-type: none"> Compact size Grommet sealing system for single or multiple cable entries No special tools required Integrated Permanent lid Gasket for quick re-entry 	<ul style="list-style-type: none"> 40 Ct. LITE-GRIP Splice Tray #LGSTS16 ADSS Aerial Mounting: 8003864 Vertical Mounting: 8003703
<i>Splice Capacity:</i> 80 and 120 single fusion		
<i>Cable Entrance Ports:</i> 4 x 1 1/4" max cable OD		
<i>Multi-hole Grommets:</i> up to 12 entry per grommet		

*Standards: All COYOTE® Closures above are Telcordia GR-771 Tested, RDUP (RUS) Listed.

DEMARICATION SOLUTIONS

FIBER OPTIC DEMARICATION: COYOTE® SERIES



COYOTE MPC

Typical Applications

Demarcation – External or Internal Substations, Commercial Buildings or Residential FTTH

Specification	Features	Accessories
<i>Dimensions:</i> 16" x 14" x 4"	<ul style="list-style-type: none"> Factory Preterminated option Flexible platform & grid pattern for custom interior organization Grommet sealing system for single or multiple cable entries PLP & commercially available grommet fittings Ceramic Sleeve adaptors 	<ul style="list-style-type: none"> 40 Ct. LITE-GRIP Splice Tray #LGSTS16 Vertical Wall Mount through 4 interior fastener locations
<i>Splice Capacity:</i> 80 single fusion		
<i>Cable Entrance Ports:</i> 8 x 1" max cable OD		
<i>Multi-hole Grommets:</i> up to 8 entry per grommet		
<i>Standards:</i> Telcordia GR-771 Tested, NEMA4, UL 94-5VA		

DEMARICATION SOLUTIONS, CONTINUED

FIBER OPTIC DEMARICATION: COYOTE® SERIES



AXCESS Solutions™ Preterminated Rack Mount and Wall Mount Cabinets

Typical Applications

Demarcation for Wall Mount & Rack Mount installations. Substations, Commercial Buildings or Residential FTTX

Specification

Rack Mount Cabinet size (Shown) – #RDC6
 Dimensions: 17" x 14" x 3.25"
 Height: 2 Rack Unit
 Cabinet Steel: 16 gauge
 Splice Capacity: 72 fiber ct.
 Fit: 19" or 23" racks
 Other cabinets from 12 to 288 ct. splice capacity available
 Wall Mount Cabinets from 24 to 144 ct. splice capacity available

Features

- Factory Preterminated
- Almond or Black Powder coat finish
- 100% tested & labeled
- Wall mounts have lockables splice compartment
- Color-Coated pigtailed
- Built to custom specs for added labor savings
- UPC or APC polishes
- Ceramic Sleeve adaptors

Accessories

- 36 Ct. Standard Splice Tray #80805514
- Mounting Hardware included with cabinet
- Adaptor Plates: 6, 8, and 12 ports available

AERIAL CABLE ATTACHMENT HARDWARE SOLUTIONS

ADSS DISTRIBUTION APPLICATIONS: FIBERLIGN® SERIES

DEAD-ENDS SOLUTIONS



FIBERLIGN® Dielectric Dead-end–Limited Tension, Catalog Series 2872xxx

Typical Applications

Distribution for Semi-Rural and Metro Environments

Specification

Maximum installation or long term load: 1000#
 Maximum ice & wind load or short term load: 2500#
 Maximum span: 600'
 Overall length: 48" for cable OD's .400"-1.073"
 Overall length: 60" for cable OD's 1.074"-1.288"
 Standards: IEEE 1222

Features

- Dual Layer Formed Wire Dead-end
- Helical holding concept – Low distributed pressure
- Aesthetics: Low profile closely matches cable
- Unloading Capability: Holding stress reduces as ice and wind dissipate (whereas wedge clamps continue high stress without relief)

Accessories

- Thimble Clevis and 14" extension link with 5/8"-11 Eye-nut
- Suffix Codes for Mounting:
 - Wood pole "C1E1"
 - Concrete or steel pole (banding bracket): "C1E1B1"



FIBERLIGN Lite Tension Dead-end, Catalog Series 2875xxx

Typical Applications

Distribution for Short Span Metro Environments

Specification

Maximum installation or long term load: 600#
 Maximum ice & wind load or short term load: 800#
 Maximum span: 300'
 Overall length: 28" to 49"
 Cable OD's: .375"-.750"
 Standards: IEEE 1222

Features

- Single layer formed wire
- Helical holding concept – Low distributed pressure
- Aesthetics: Low profile closely matches cable
- Unloading Capability: Holding stress reduces as ice and wind dissipate
- Hybrid Aluminum & Al Clad Steel design for optimized fatigue strength and installation flexibility

Accessories

- Thimble Eyelet accepts 5/8" bolt
- Suffix Codes for Mounting:
 - Wood pole "TE"
 - Concrete or steel pole (banding bracket): "TEB1"

AERIAL CABLE ATTACHMENT HARDWARE SOLUTIONS, CONTINUED

ADSS DISTRIBUTION APPLICATIONS: FIBERLIGN® SERIES

TANGENT SOLUTIONS



FIBERLIGN Aluminum Support (FAS), Catalog Series 445xxxx

Typical Applications

Distribution for Semi-Rural and Metro Environments

Specification

Maximum Span: 600'
Maximum Turning Angle: 20 degrees
Maximum Stringing Turning Angle: 10 degrees
Accepts: 5/8" Bolt or 1 1/4" wide band
Body Width: 3.2"
Cable OD's: .226"-1.425"
Standards: IEEE 1222

Features

- Hinged aluminum body
- Multi-Cable & stacking capability
- Polyurethane cushion inserts
- Captured fasteners
- Stringing Block capability

Mounting Accessories

- Mounting options are cast into base – customer supplies 5/8" through-bolt for wood pole or banding material for steel and concrete poles



FIBERLIGN Lite Support (FLS), Catalog Series 4800xxx

Typical Applications

Distribution for Short Span Metro Environments

Specification

Maximum Span: 300'
Maximum Turning Angle: 20 degrees
Maximum Stringing Turning Angle: 10 degrees
Accepts: 5/8" Bolt or 3/4" wide band.
Body Width: 2.75"
Small Insert Cable OD's: .250"-.699"
Large Insert Cable OD's: .250"-1.054"
Standards: IEEE 1222

Features

- Tough polyurethane housing halves
- Multi-Cable & stacking capability
- One-piece pliable cushion Insert
- Stringing Block capability

Mounting Accessories

- Wood pole use 5/8"-11 double arming bolt
- Concrete or steel poles use 3/4" wide banding and carriage bolt option "H2". Suffix Code H2 includes carriage bolt with washer, lock washer, and nut

CABLE STORAGE SOLUTIONS



FIBERLIGN CLAS Storage, Catalog Series 710012375----

Typical Applications

All Dielectric Cable Storage for all Distribution Environments

Specification

Max Storage Length: span length x2 (virtually unlimited)
Maximum Storage Diameter: 20"
Maximum Cable OD: 1"
Cable Straps: heavy duty 1/2" wide with superior UV resistance
Kit Includes: 2 ea. CLAS brackets, cable polepass option and 10 straps
Standards: IEEE 1222

Features

- Center-Lock hinge design
- Extended hinge minimizes stress
- Minimizes infringement of pole space
- Folds and separates for efficient storage
- Brackets available for all butt splice closure storage
- Uni-Group Cable Guide (UCG) used to guide cable pass pole

Accessories

- UCG Mounting:
- Wood Pole – lag bolts included
 - Steel or concrete pole – 3/4" banding material required
 - Butt Splice Bracket Suffix Codes:
 - "D1" for 6.5" Domes
 - "R1" for In-Line RUNT
 - "T1" for 25 added cable straps



PREFORMED LINE PRODUCTS

World Headquarters

Preformed Line Products Company
660 Beta Drive
Cleveland, Ohio 44143

Mailing Address

P.O. Box 91129
Cleveland, Ohio 44101

Telephone: 440.461.5200

Fax: 440.442.8816

Web Site: www.preformed.com

E-mail: inquiries@preformed.com

© 2009 Preformed Line Products Company

Printed in U.S.A.

EN-BR-1005-1

9-09-2M